

Plan 10

Created on
2019-11-29

Total area 3326.58 sq ft	Floors 2	Rooms 6	Bathrooms 4
------------------------------------	--------------------	-------------------	-----------------------

Plan 10

TOTAL AREA: 3326.58 sq ft • LIVING AREA: 2789.32 sq ft • FLOORS: 2 • ROOMS: 6



▼ Ground Floor

TOTAL AREA: 2794.92 sq ft • LIVING AREA: 2257.66 sq ft • ROOMS: 5



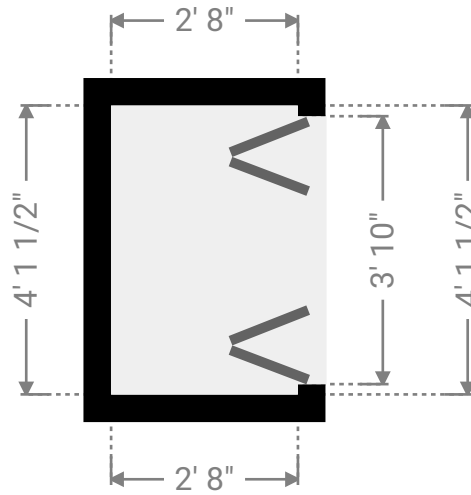
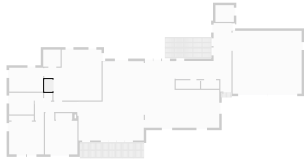
Plan 10

TOTAL AREA: 3326.58 sq ft • LIVING AREA: 2789.32 sq ft • FLOORS: 2 • ROOMS: 6



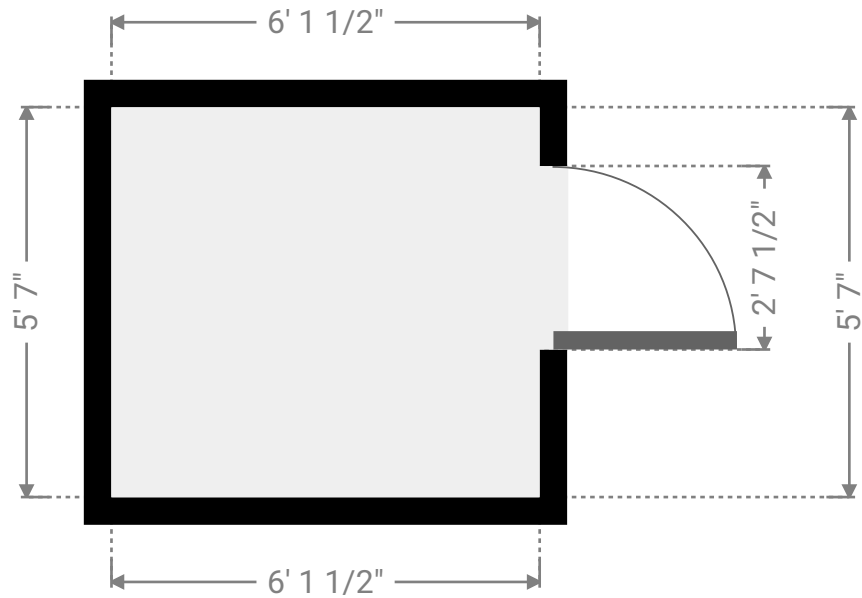
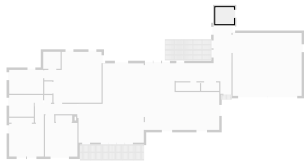
▼ Closet Ground Floor

WIDTH: 2' 8" • LENGTH: 4' 1 1/2"
AREA: 11.04 sq ft • PERIMETER: 13' 7 1/4"



▼ Bathroom Ground Floor

WIDTH: 6' 1 1/2" • LENGTH: 5' 7"
AREA: 34.16 sq ft • PERIMETER: 23' 4 3/4"



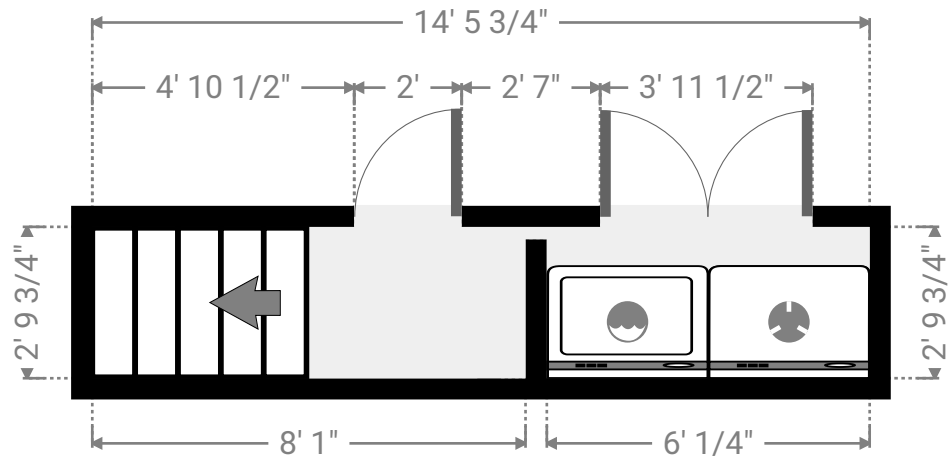
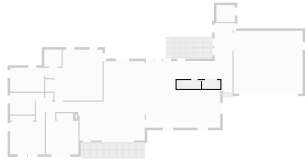
Plan 10

TOTAL AREA: 3326.58 sq ft • LIVING AREA: 2789.32 sq ft • FLOORS: 2 • ROOMS: 6



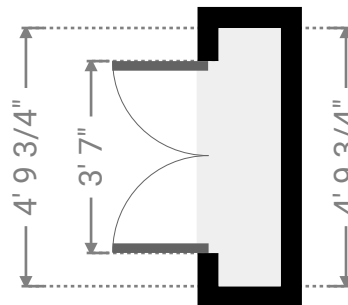
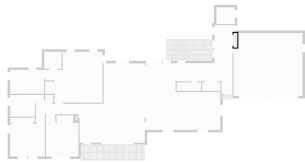
▼ Closet Ground Floor

WIDTH: 14' 5 3/4" • LENGTH: 2' 9 3/4"
AREA: 39.85 sq ft • PERIMETER: 39' 9 3/4"



▼ Closet Ground Floor

WIDTH: 1' 2" • LENGTH: 4' 9 3/4"
AREA: 5.58 sq ft • PERIMETER: 11' 11 1/4"



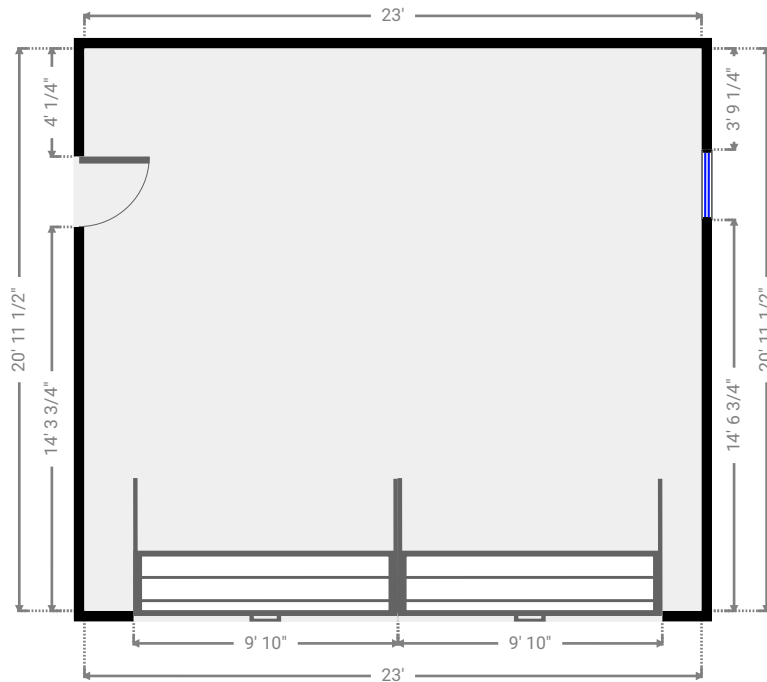
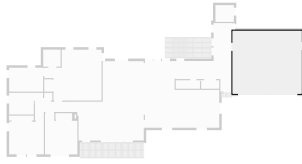
Plan 10

TOTAL AREA: 3326.58 sq ft • LIVING AREA: 2789.32 sq ft • FLOORS: 2 • ROOMS: 6



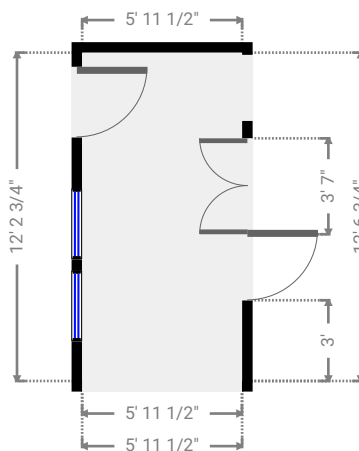
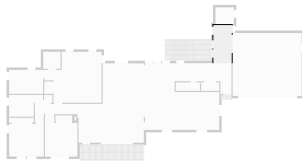
▼ Garage Ground Floor

WIDTH: 23' • LENGTH: 20' 11 1/2"
AREA: 482.12 sq ft • PERIMETER: 87' 11"



▼ Hall Ground Floor

WIDTH: 5' 11 1/2" • LENGTH: 12' 2 3/4" • CEILING HEIGHT: 7' 1/4"
AREA: 72.97 sq ft • PERIMETER: 36' 4 3/4"



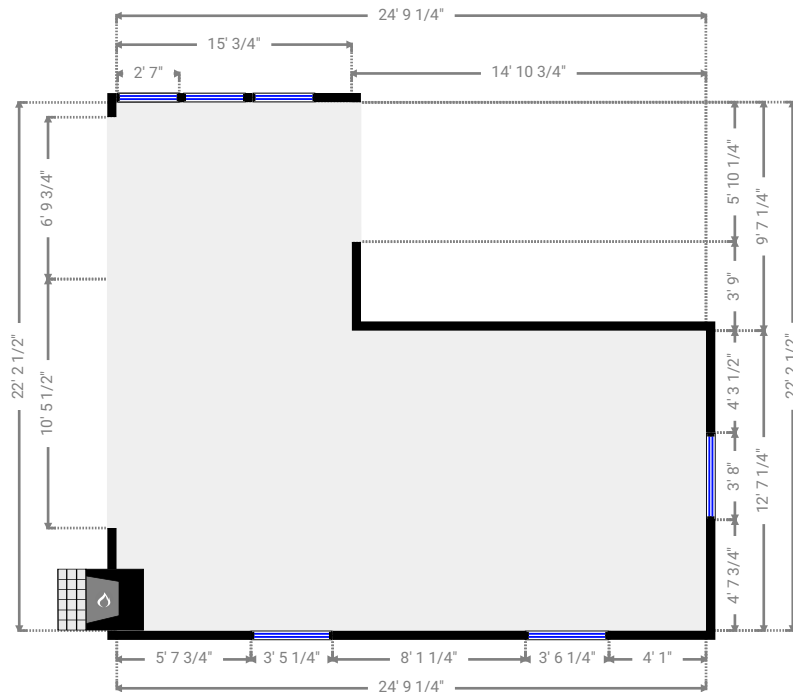
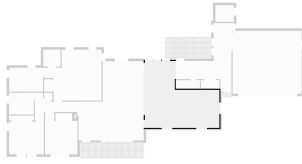
Plan 10

TOTAL AREA: 3326.58 sq ft • LIVING AREA: 2789.32 sq ft • FLOORS: 2 • ROOMS: 6



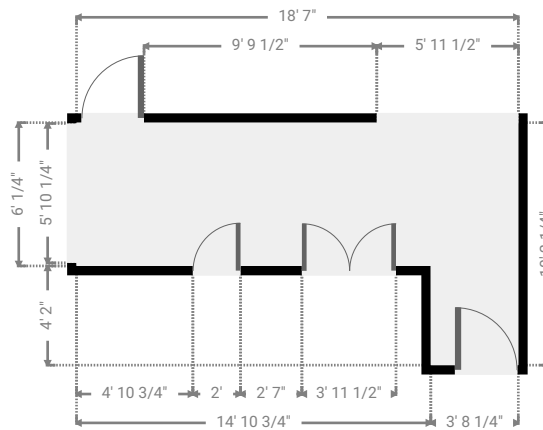
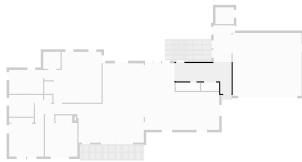
▼ Dining Room Ground Floor

WIDTH: 24' 9 1/4" • LENGTH: 22' 2 1/2" • CEILING HEIGHT: 8' 2"
AREA: 407.03 sq ft • PERIMETER: 93' 11 1/2"



▼ Hall Ground Floor

WIDTH: 18' 7" • LENGTH: 10' 2 1/4" • CEILING HEIGHT: 9' 5 1/4"
AREA: 127.23 sq ft • PERIMETER: 57' 6 1/2"



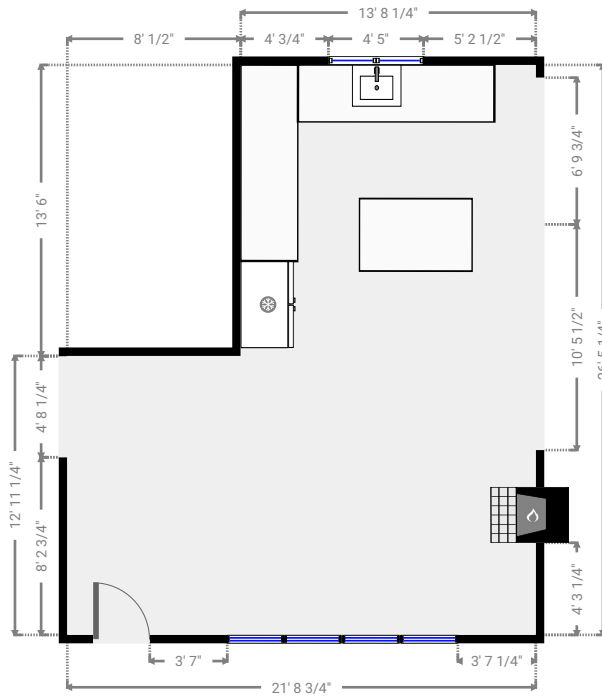
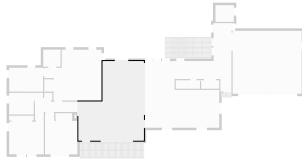
Plan 10

TOTAL AREA: 3326.58 sq ft • LIVING AREA: 2789.32 sq ft • FLOORS: 2 • ROOMS: 6



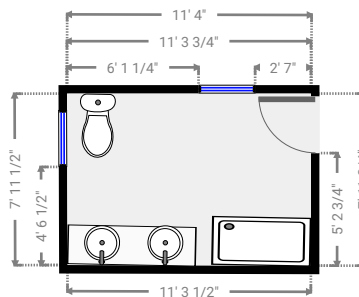
▼ Living Room Ground Floor

WIDTH: 21' 8 3/4" • LENGTH: 26' 5 1/4" • CEILING HEIGHT: 7' 1/2"
AREA: 465.62 sq ft • PERIMETER: 96' 3 3/4"



▼ Bathroom Ground Floor

WIDTH: 11' 4" • LENGTH: 7' 11 3/4" • CEILING HEIGHT: 7' 7 3/4"
AREA: 90.03 sq ft • PERIMETER: 38' 6 1/2"



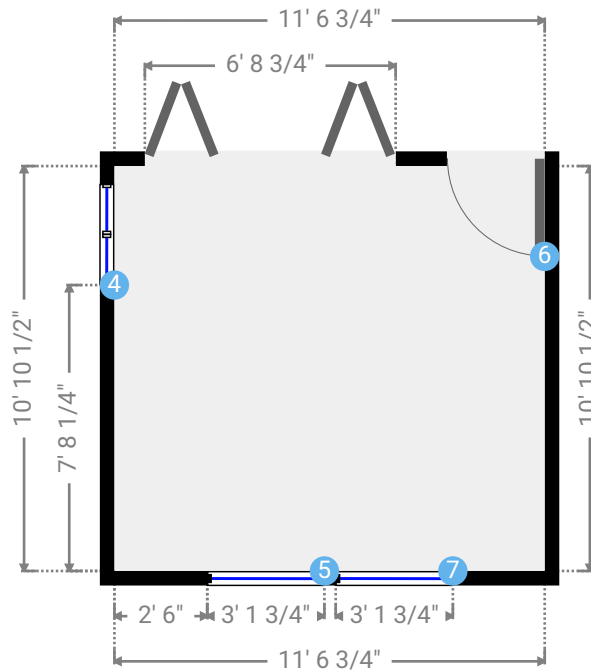
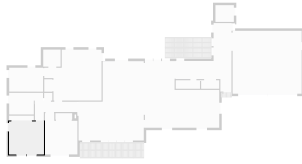
Plan 10

TOTAL AREA: 3326.58 sq ft • LIVING AREA: 2789.32 sq ft • FLOORS: 2 • ROOMS: 6



▼ Bedroom Ground Floor

WIDTH: 11' 6 3/4" • LENGTH: 10' 10 1/2" • CEILING HEIGHT: 9' 7 3/4"
AREA: 125.81 sq ft • PERIMETER: 44' 10 3/4"



▼ Bedroom/Ground Floor

4 FRENCH WINDOW

Height
4' 4 1/2"

Distance to Floor
2' 1 1/4"



5 HOPPER WINDOW

Height
4' 9 1/4"

Distance to Floor
2' 1/2"



6 HINGED DOOR

Height
5' 11"



7 HOPPER WINDOW

Height
4' 9 1/4"



Plan 10

TOTAL AREA: 3326.58 sq ft • LIVING AREA: 2789.32 sq ft • FLOORS: 2 • ROOMS: 6

▼ Bedroom/Ground Floor

7 HOPPER WINDOW

Distance to Floor
2' 1/2"



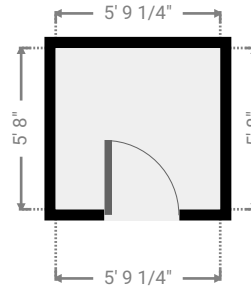
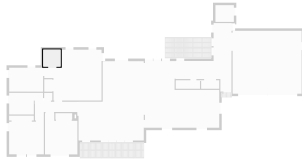
Plan 10

TOTAL AREA: 3326.58 sq ft • LIVING AREA: 2789.32 sq ft • FLOORS: 2 • ROOMS: 6



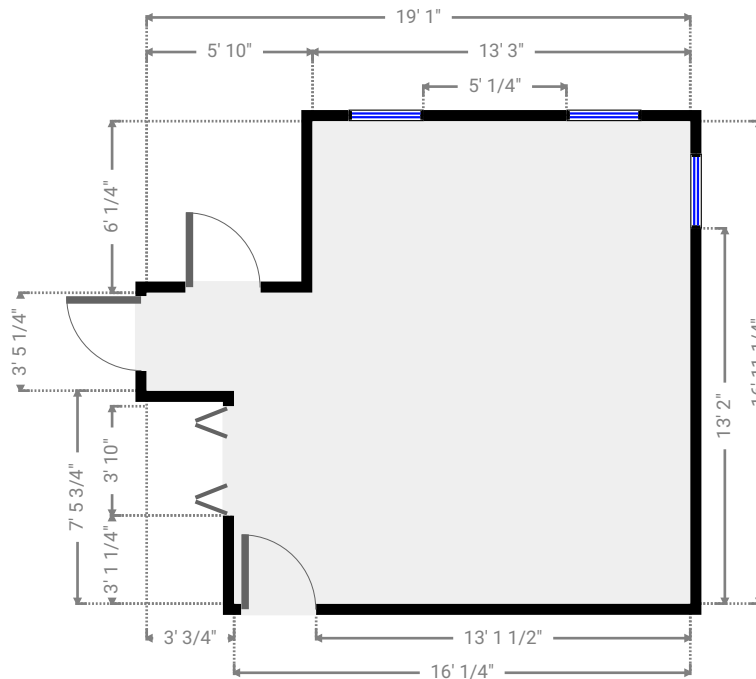
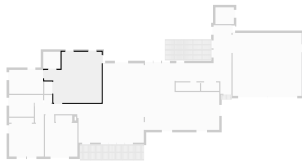
▼ Closet Ground Floor

WIDTH: 5' 9 1/4" • LENGTH: 5' 8"
AREA: 32.69 sq ft • PERIMETER: 22' 10 1/2"



▼ Bedroom Ground Floor

WIDTH: 19' 1" • LENGTH: 16' 11 1/4" • CEILING HEIGHT: 7' 10 1/4"
AREA: 265.15 sq ft • PERIMETER: 72' 1/2"



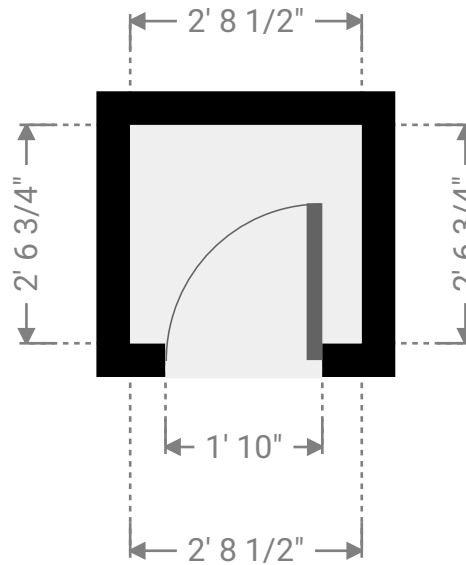
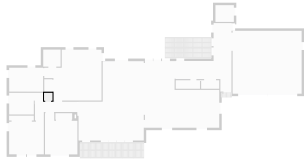
Plan 10

TOTAL AREA: 3326.58 sq ft • LIVING AREA: 2789.32 sq ft • FLOORS: 2 • ROOMS: 6



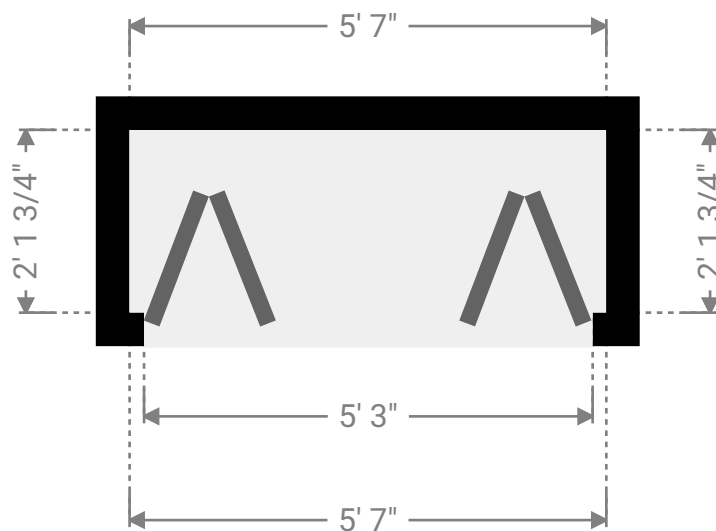
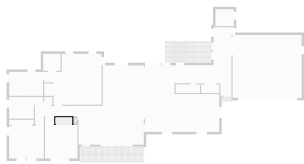
▼ Closet Ground Floor

WIDTH: 2' 8 1/2" • LENGTH: 2' 6 3/4"
AREA: 6.93 sq ft • PERIMETER: 10' 6 1/2"



▼ Closet Ground Floor

WIDTH: 5' 7" • LENGTH: 2' 1 3/4"
AREA: 11.93 sq ft • PERIMETER: 15' 5 1/4"



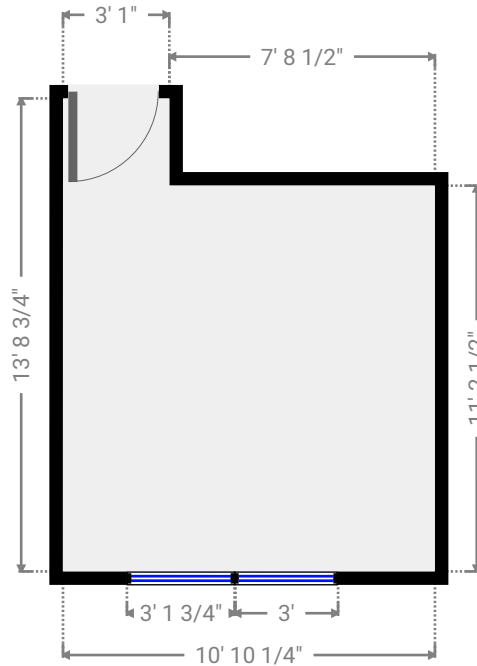
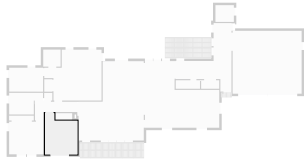
Plan 10

TOTAL AREA: 3326.58 sq ft • LIVING AREA: 2789.32 sq ft • FLOORS: 2 • ROOMS: 6



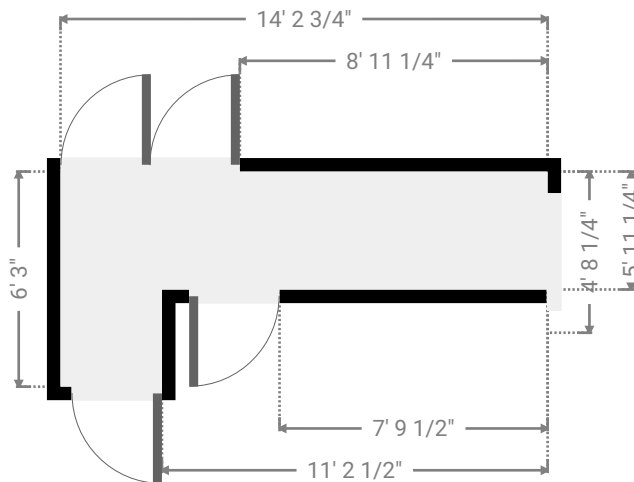
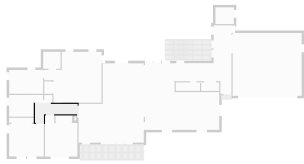
▼ Bedroom Ground Floor

WIDTH: 10' 9 1/2" • LENGTH: 13' 8 3/4" • CEILING HEIGHT: 8' 2 1/4"
AREA: 128.80 sq ft • PERIMETER: 49' 3/4"



▼ Hall Ground Floor

WIDTH: 14' 1 3/4" • LENGTH: 6' 3" • CEILING HEIGHT: 7' 2"
AREA: 56.75 sq ft • PERIMETER: 40' 9 1/2"



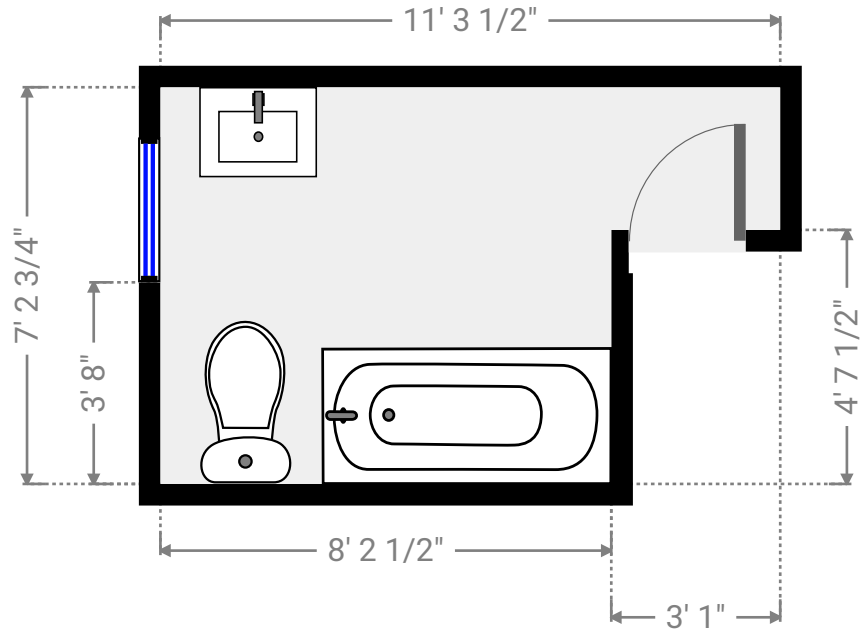
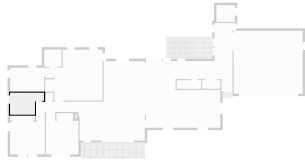
Plan 10

TOTAL AREA: 3326.58 sq ft • LIVING AREA: 2789.32 sq ft • FLOORS: 2 • ROOMS: 6



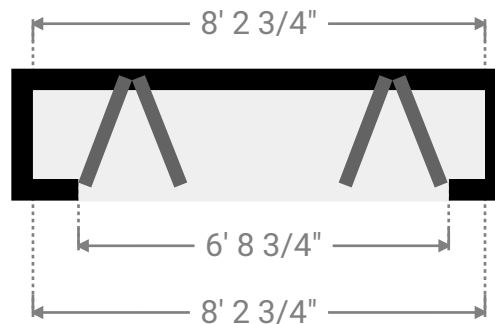
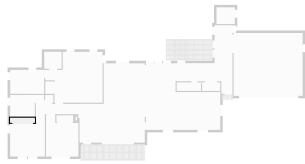
▼ Bathroom Ground Floor

WIDTH: 11' 3 1/2" • LENGTH: 7' 2 3/4" • CEILING HEIGHT: 7' 1 1/4"
AREA: 67.25 sq ft • PERIMETER: 37'



▼ Closet Ground Floor

WIDTH: 8' 2 3/4" • LENGTH: 1' 7 1/2"
AREA: 13.29 sq ft • PERIMETER: 19' 8 1/4"



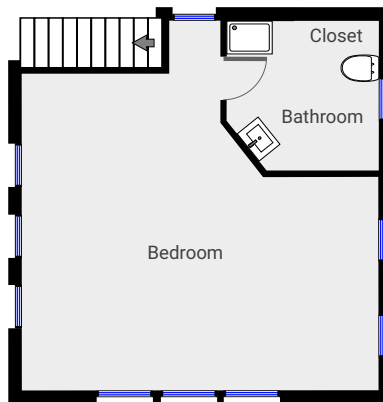
Plan 10

TOTAL AREA: 3326.58 sq ft • LIVING AREA: 2789.32 sq ft • FLOORS: 2 • ROOMS: 6



▼ 2nd Floor

TOTAL AREA: 531.66 sq ft • LIVING AREA: 531.66 sq ft • ROOMS: 1



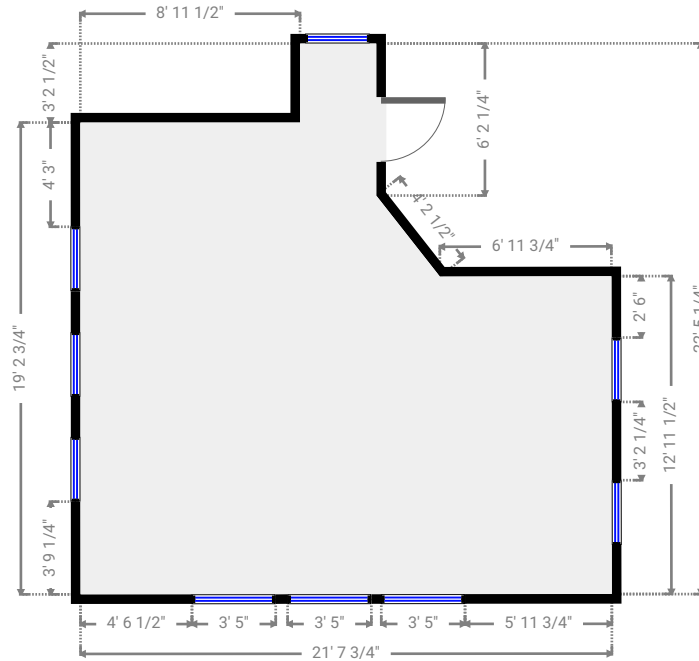
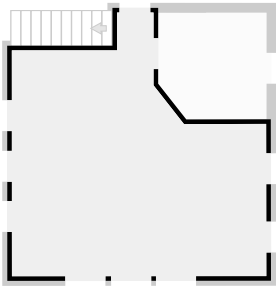
Plan 10

TOTAL AREA: 3326.58 sq ft • LIVING AREA: 2789.32 sq ft • FLOORS: 2 • ROOMS: 6



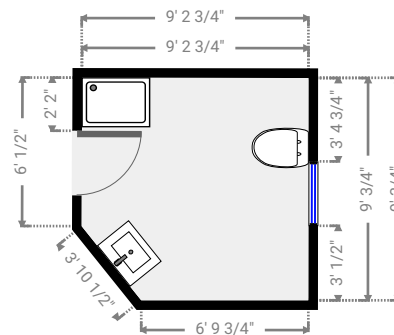
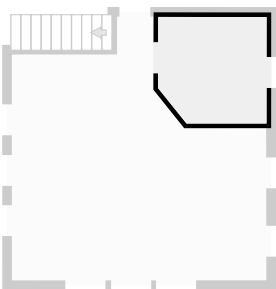
▼ Bedroom 2nd Floor

WIDTH: 21' 7 3/4" • LENGTH: 22' 5 1/4" • CEILING HEIGHT: 10' 2 3/4"
AREA: 370.01 sq ft • PERIMETER: 86' 5 3/4"



▼ Bathroom 2nd Floor

WIDTH: 9' 2 3/4" • LENGTH: 9' 3/4" • CEILING HEIGHT: 8' 8"
AREA: 79.99 sq ft • PERIMETER: 35'



Plan 10

TOTAL AREA: 3326.58 sq ft • LIVING AREA: 2789.32 sq ft • FLOORS: 2 • ROOMS: 6



▼ Closet 2nd Floor

WIDTH: 5' 1 3/4" • LENGTH: 1' 10 1/2"
AREA: 9.61 sq ft • PERIMETER: 14' 1/4"

